



ORACLE Gold Partner

# Groundbreakers Tour Perú



insum



An abstract network diagram consisting of several nodes (colored red, blue, and light blue) connected by thin, curved lines. The nodes are scattered across the right side of the image, with a higher density of connections in the center-right area. The lines are thin and grey, creating a web-like structure.

# David López Abugattas

*Client Services Director INSUM Global*

*Director de la Práctica Oracle APEX LATAM*

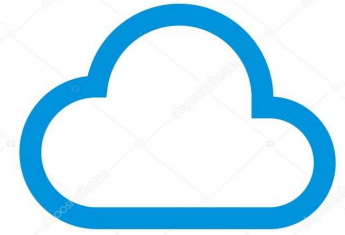
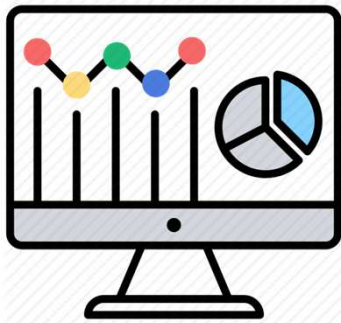
*Consultor Senior*

# Forms y APEX: En Sinergia

The background of the slide is a solid green color. Overlaid on this background is a complex, abstract geometric pattern. It consists of numerous thin, white lines that form a network of interconnected circles and arcs. Some of these lines are straight, while others are curved, creating a sense of dynamic movement and interconnectedness. The pattern is denser on the right side of the slide and becomes sparser towards the left, where the text is located. The overall aesthetic is clean, modern, and technical.



# No sería excelente que Forms permitiera...





# Demo: APEX



# Oracle Application Express (APEX)

Framework-Desarrollo-Web, centrado en la Base de Datos



Develop desktop and mobile web apps



Visualize and maintain database data



Leverage SQL skills and database capabilities



# Demo: Desarrollo APEX



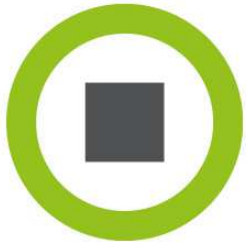
# Demo: Forms y APEX en Sinergia





# Forms vs APEX

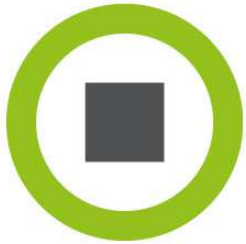
OPTIONS	FORMS	APPLICATION EXPRESS
4GL DECLARATIVE	Yes	Yes
4GL LANGUAGES	<b>SQL and PL/SQL</b>	<b>SQL and PL/SQL</b>
USER INTERFACE UI	Java	HTML / JavaScript
PAGE LAYOUT	Windows / Canvas	Pages / Regions
CLIENT CONTROL	Form triggers	JavaScript (jQuery) and AJAX
<b>WEBSERVICES</b>	Yes	Yes (Easy with ORDS)
GRAPHICS	BI Beans	HTML5 and Oracle Jet
LOCKING	Pessimistic, optimistic, customized	Optimistic
DB CONNECTIONS	Synchronous	Asynchronous (Connection pools)
CONCURRENT USERS	Connection maintained by Oracle users	Connection by page / request
ARCHITECTURE	3 Tiers	3 Tiers (App and DB together)



## Licencias

Modalidad	Mensual	Anual	Perpetua
Opciones	Modulo Móvil	Modulo Chatting	Modulo Interactive Reports

\$0000.00



## Consejos para Migraciones y Convivencia

0-Estimacion apropiada

50+ Forms?

Planificación, gobernanza, recursos

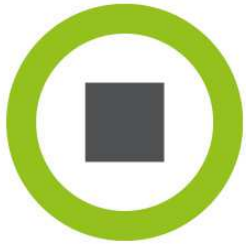


# Consejos para Migraciones y Convivencia

1-APEX no es FORMS

...Y eso es muy Bueno

Ubicación componentes



# Consejos para Migraciones y Convivencia

## 2-Authenticación

Cuentas de BD, personalizada, RAS



# Consejos para Migraciones y Convivencia

## 3-Autorización

Roles de BD, personalizada, VPD



# Consejos para Migraciones y Convivencia

## 4-Single Sign-On Transparente al usuario

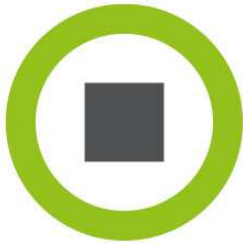


# Consejos para Migraciones y Convivencia

## 5-Inventario

Todo componente considerado





Application Migrations

1-Create Migration Project

Go Rows 50 Actions

Project Name

Reset

Create Project

Edit	Project Name	Type	Schema	Forms	Triggers	Blocks	Program Units	PLLs	MMBs	OLBs	Reports
	AdaptIT_POC	forms	IODEV	5	515	46	18	0	0	0	0

1 - 1

Upload Parameter File

Go Rows 50 Actions

2-Upload FMBs

Edit	Type	File Name	Blocks	DB Blocks	Items	Triggers	Record Groups	Lists of Values	Alerts	Program Units	Component Count	Percent Complete
	FMB	f1912_fmb.xml	10	8	88	106	6	3	17	0	265	100.00
	FMB	f1913_fmb.xml	9	9	111	102	4	1	17	0	280	100.00
	FMB	f2072_fmb.xml	10	9	109	114	5	1	18	13	305	100.00
	FMB	f2206_fmb.xml	9	8	101	104	7	4	17	5	283	100.00
	FMB	f2230_fmb.xml	8	8	114	89	5	2	17	0	270	100.00

1 - 5



File Name = f2072\_fmb.xmlf

Edit	Form Name	Trigger Name	Trigger Level	Trigger Snippet	Trigger Length	Applicable	Complete	Assignee	Block Name	Item Name	Notes Snippet	File Name
	f2072	KEY-DOWN	Block			No	Yes		BC_MESSAGES			f2072_fmb.xml
	f2072	KEY-DOWN	Block			No	Yes		DRILL_DOWN			f2072_fmb.xml
	f2072	KEY-DOWN	Block	BEGIN ALL_BLOCKS.MOVE_DOWN; EXCEPTION WHEN form_trigger_failure THEN RAIS ...	161	No	Yes		B1			f2072_fmb.xml
	f2072	KEY-ENTQRY	Block			No	Yes		BC_MESSAGES			f2072_fmb.xml
	f2072	KEY-EXEQRY	Block			No	Yes		BC_MESSAGES			f2072_fmb.xml
	f2072	KEY-EXIT	Block			No	Yes		DRILL_DOWN_TREE			f2072_fmb.xml
	f2072	KEY-EXIT	Block			No	Yes		DRILL_DOWN			f2072_fmb.xml

Analysis: Identify code to be migrated, dead code

Application Migrations | Project: AdaptIT\_POC | Forms Objects | Triggers | Block Trigger Details

### Block Trigger Details

Show All

### Block Trigger Details

Block Name: B1

```
Block Trigger Name: KEY-DOWN
Trigger Text:
BEGIN
  ALL_BLOCKS.MOVE_DOWN;
EXCEPTION
  WHEN form_trigger_failure THEN
    RAISE;
  WHEN OTHERS THEN
    message(SQLERRM);
    RAISE form_trigger_failure;
END;
```

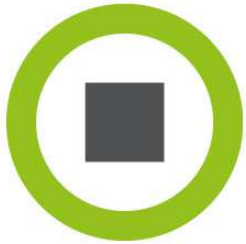
### Annotations

Applicable: No

Priority: 3

Complete: Yes

Assignee: - Select Assignee -



## Consejos para Migraciones y Convivencia

### 6-Ciclo Desarrollo Ágil según Inventario

# Nuestros Clientes



# insum

Desarrollo  
Personalizado

Aumento de  
equipos

Oracle APEX

**ORACLE** Gold  
Partner

**500**

Technology **Fast 500**  
2017 CANADA **WINNER**

**Deloitte.**  
Insum.com

Innovación APEX  
& Mejores  
Practicas

Mundialmente  
Reconocidos





## Conclusiones

+APEX extiende grandemente la funcionalidad de aplicaciones Forms, es fácil de aprender, gratis de usar.



¿Preguntas?



# Gracias!

---

Insum.ca  
info@insum.ca

